



**A T B**  
*Environmental  
Consulting*

A member of the A T B GROUP



# Who Are We

- **A7B Environmental Consulting** is a South African based independent Environmental, Health, Safety & Occupational Hygiene consultancy
- Part of the wider A7B Group (Pty) Limited - owned and operated by Adam Bennett (*Managing Director*)
- 100% Disability owned (DBE), level 4 B-BBEE rating, aligned with the mining charter and other employment equity requirements.



- 
- We excel at developing and implementing innovative and transformative solutions, mechanization and/or automation to address the challenges faced
  - Our solutions are critically focussed to yield positive production, economic, environmental, social, H&S, occupational hygiene and general human health benefits allowing for enhanced business sustainability
  - Our teams experience allows us to critically analyse our Client's challenges, develop strategic and operational plans to address the gaps, implement the strategies/plans in a simplified manner to yield tangible and intangible positive results to an organisation, operations and projects.
  - **Core values:** *Integrity; Honesty; Innovation; Excellence; Collaboration; Accountability; Sustainability & Health & Safety*

# Who Are We

- Adam Bennett - specialist environmental consultant – 20-years' integrated environmental management experience in Southern, Central, West, East Africa and other international countries
- SACNASP (# 400142/08) Environmental Science
- EAPASA (#2021/3860) Environmental Assessment Practitioner
- SAIOH (#2108) Occupational Hygiene Assistant (OHA)



South African  
Institute of  
Occupational Hygiene



# Core Services

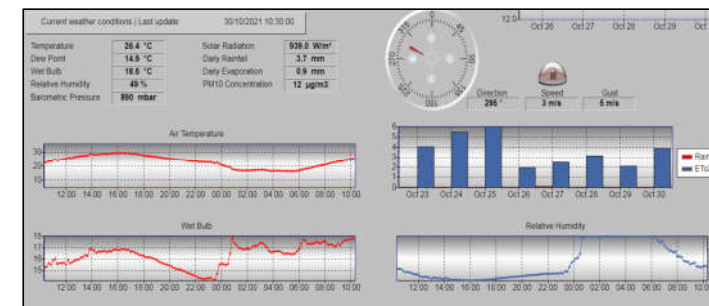
- Air Quality, Noise and Vibration Monitoring and Management
- Environmental and social governance (ESG), Environmental and Social Due Diligence (ESDD) & Enviro-Social Auditing
- Integrated Enviro-Social Management and associated regulatory processes: EIA; ESIA; EMPs; EMP<sub>r</sub>; ESMPs; WUL; IWWMPs; WMPs; WML etc.
- HAZMAT, Contaminated Land & Remediation services
- Occupational Hygiene Services
- Industrial & Commercial Photography & Videography via

**ATB PHOTOGRAPHY**  
A member of the ATB GROUP



# Air Quality Monitoring

- Establishment, operation, maintenance and management of monitoring networks including:
  - Dust fallout (ASTM D1739) - *SANAS accredited analysis*
  - Directional dust flux sampling - *Source apportionment studies & mitigation monitoring*
  - Fine particulate monitoring (PM<sub>10</sub>, PM<sub>2.5</sub>)
  - Meteorological parameters
  - Trace gas pollutants: NO<sub>x</sub>, SO<sub>x</sub>, VOCs etc.
  - Lightning
  - Landfill gas
  - Stack sampling - *with preferred service partners*
  - Emissions grab sampling
- Monitoring network auditing & optimisation assessments
- Air quality monitoring data automation and dashboarding for enhanced site health and safety risk management –  
*Major cost savings regarding contractor standing time claims via our bespoke systems*



# Air Quality Management

## Regulatory support services including:

- Baseline & Air Quality Impact Assessments
- Emissions inventories & modelling (air dispersion, odour & radiation)
- Atmospheric Emissions Licensing (AEL) & compliance/performance auditing
- Due diligence air quality auditing
- Air quality health risk assessments
- National Atmospheric Emission Inventory System (NAEIS) reporting
- Stack height optimisation assessments

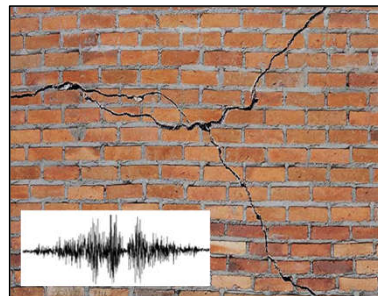
## Plans & Strategies including:

- Dust Management Plans (DMP)
- Emissions reduction plans & strategies
- Air Quality Management Plans (AQMP)



# Noise & Vibration Monitoring and Management

- Baseline noise and vibration monitoring
- Noise impact assessments (NIA):
  - Quantitative with predictive noise calculations or
  - Quantitative with prognostic propagation noise modelling
- Noise management plans & mitigation strategies
- Blasting noise and vibration assessments
- Crack surveys





# Environmental and social governance (ESG)

- Environmental and Social Due Diligence (ESDD) fatal flaw and gap analysis between local and IFC Performance Standards (IFC PS)
- Preparation and review of E&S management policies, systems and plans
- Preparation of Environmental and Social Action Plans (ESAPs)
- ESDD performance auditing of projects against: local; IFC PS; World Bank guidelines; Equator Principles; & Lender requirements
- Environmental and social monitoring and reporting





# Integrated Environmental Management

- Integrated regulatory processes & permitting: EIA; ESIA; EMPs; EMPr; WUL; IWWMPs; WMPs; WML etc.
- Environmental, health and safety risk assessments
- Stakeholder engagement and community liaison
- Auditing:
  - Permit / Licence compliance auditing
  - Environmental control officer (ECO) monitoring and reporting
  - Environmental and Social Due Diligence (ESDD) performance auditing
- Full suite of EIA enviro-social specialist studies and assessments via our strategic partners



# HAZMAT, Contaminated Land & Remediation

- HAZMAT:

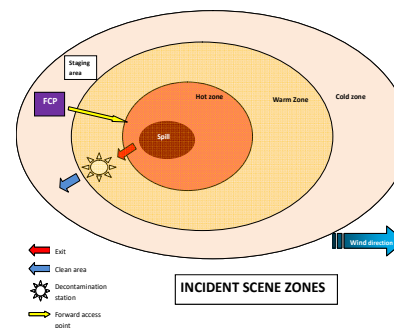
- Contamination assessments (basic & SPR)
- HAZMAT & environmental incident management and live scene response
- Hazardous chemical risk assessments
- Environmental accident investigations
- Remediation & rehabilitation oversight
- Eco toxicity testing
- Asbestos surveys, risk assessments & demolition plans

- Training: *(non-accredited)*

- HAZMAT awareness & emergency

- Planning:

- Remediation & rehabilitation planning
- Disaster management
- Emergency procedures & recovery services
- Helicopter landing zone procedures
- Technical hazardous materials (HAZMAT) support on projects
- Major Hazardous Installations assessments (MHI)



# Occupational Hygiene Services

- Surveys and assessments:

- Occupational & Environmental noise
- Airborne contaminants
- Ventilation
- Illumination (non-accredited)
- Ergonomics
- Indoor air quality
- Thermal stress
- Health risk assessments (HRA)
- Asbestos surveys and risk assessments
- Hazardous chemical agent risk assessments
- Hazardous chemical compatibility assessments

- Medical screening & Clinic services

- Employee assistance programmes & mental health programmes

- Training



*Note: Some services provided in association with preferred service partners*

# Industrial & Commercial Photography & Videography

These services are provided via **ATB PHOTOGRAPHY**  
A member of the ATB GROUP

- Industrial & Mining process photography
- Commercial product photography
- Executive portraiture
- Process videography and training videos



# Few clients whose environmental projects we have supported

**IVANPLATS**  
An IVANHOEMINES company

**Vanchem Vanadium Products**  
Dufenco GROUP

**SOLARRESERVE**



# Few clients whose occupational hygiene projects we have supported

ArdaghGroup



Thank You

**Contact us:**

*Adam Bennett*

*adam@atbenviro.co.za*

*Cell: +27 (0) 83 538 9424*

*www.atbenviro.co.za*

**ATB**  
***Environmental***  
***Consulting***